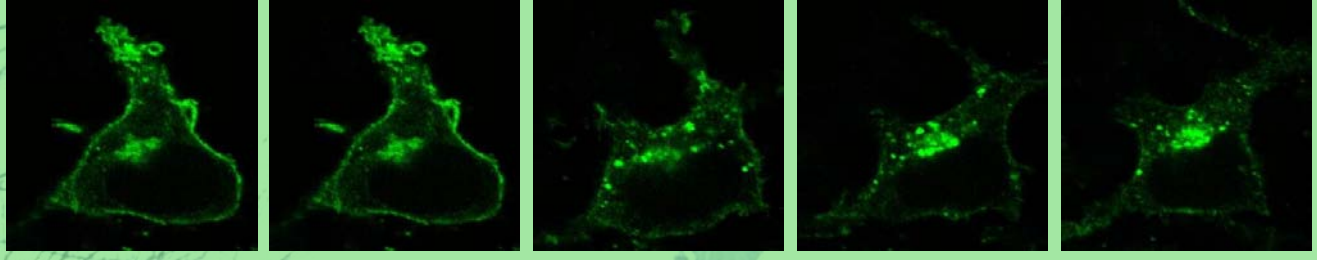


2011 Birmingham UK Endocytosis Conference



Date: 4-5th April 2011

Venue: School of Biosciences, University of Birmingham, B15 2TT, UK

Schedule:

Sessions and Invited Speakers:

Session 1: Endocytosis of Pathogens and within Model Organisms:

Mark C. Field
Kathryn R. Ayscough
Jane McKeating
Robert Insall

Session 2: Biophysics and Imaging in Endocytosis Research:

Harvey McMahon
Ludger Johannes
Ian Prior

Session 3: Endocytosis in Cell Signaling, Adhesion and Migration:

Miguel del Pozo
Christophe Lamaze

Provisional Timetable:

Day 1:

1:00 – 2:30PM – Registration and Nikon A1R demonstration
2:30 – 4:00PM – Session 1a (2 invited speakers + 2 from abstract)
4:00 – 4:30PM – Tea and coffee
4:30 – 6:00PM – Session 1b (2 invited speakers + 2 from abstract)
6:00PM – Leave for conference dinner

Day 2:

9:30 – 10:30AM – Session 2a (1 invited speaker + 2 from abstract)
10:30 – 11:00AM – Tea and coffee
11:00 – 12:00PM – Session 2b (2 invited speakers)
12:00 – 2:00PM - Posters, lunch
2:00 – 3:30PM – Session 3 (2 invited speakers + 2 from abstract)

Registration:

Please register for the conference using the [online shop](#).

Registration is **£20 for the conference**, and **£40 for the conference plus conference dinner**, which will be held on the 4th April (see below).

The conference is being recognized as an Independent Meeting by the Biochemical Society, and Student Members of the Society attending the conference are eligible to apply for a **student travel bursary of £100**.

Interested students should follow this link:

<http://www.biochemistry.org/Grants/StudentBursaries.aspx>.

Abstract Submission:

Abstracts of 250 words or less should be emailed to:

ukendocytosis@gmail.com.

Eight talks will be selected from submitted abstracts. Please specify if you would like to be considered for a talk or a poster (posters should be A1 (portrait or landscape) or A0 (portrait) size) when sending your abstract. The deadline for abstract submission is **March 14th 2011**.

Conference Dinner:

The conference dinner will be held on the 4th April at **China Court Restaurant** in Birmingham city centre. We will leave from Biosciences and take the train into town together at 6pm after the last talk of the day. If you would like to attend the conference dinner, please select the conference plus dinner option when registering via the online shop.

Directions and Travel:

By Train:

Most cross-country services to Birmingham arrive at New Street Station. Up to six trains an hour depart for the University on the cross-city line (ten minutes to University station, final destination Longbridge or Redditch). The University train station is located on campus, about 2 minutes walk from the School of

By Air:

Birmingham International Airport has direct flights from locations in the UK, as well as from the USA, Canada, Europe and the Middle East.

The journey by taxi from the airport to the University takes approximately half an hour. Alternatively, Air-Rail Link provides a free, fast connection between the airport terminals and Birmingham International railway station. Air-Rail Link operates every two minutes (journey time 90 seconds). Birmingham International railway station has frequent services to New Street Station in the city centre (journey time around 15 minutes). Trains run from New Street Station to University Station roughly every 10 minutes.

If you are arriving at London, there is a frequent train service from London Euston railway station to New Street Station (journey time around 1 hour 30 minutes).

- From Heathrow Airport. Take the Heathrow Express train to Paddington Station and then the Underground or a taxi to Euston Station. Alternatively, an Airbus runs from Heathrow Airport direct to Euston Station
- From Gatwick Airport. Take the Airport Express train to Victoria Station and then the Underground or a taxi to Euston Station

By Car:

Approaching from the north west or south east along the M6:

- Leave at Junction 6 (signposted Birmingham Central) to join the A38(M)
- At the end of the motorway, keep to the right, go over a flyover, then through some underpasses to join the A38 Bristol Road
- The University is on your right, two and a half miles from the city centre

Approaching from the M42 north:

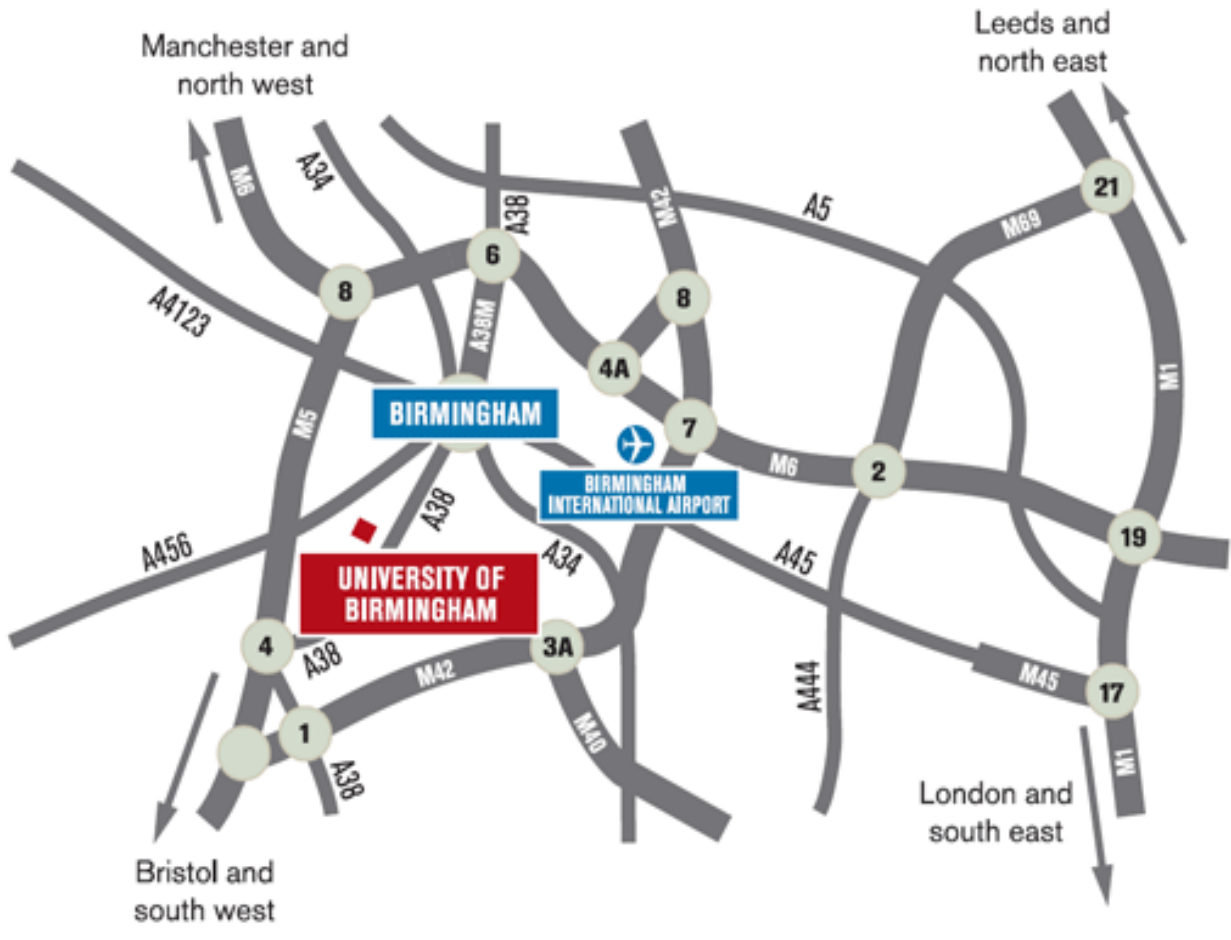
- Leave at Junction 8 to join the M6 northbound and follow the instructions above

Approaching from the south west:

- Leave the M5 at Junction 4 (signposted Birmingham SW) to join the A38
- The University is approximately eight miles from the motorway

Approaching from the M40:

- It is easier to turn south on the M42 and leave at Junction 1, heading north on the A38 Bristol Road
- The University is approximately eight miles from the motorway
-



Visitor Car Parking:

Visitors to campus are requested to park in any of the 4 pay & display car parks, those are:

- South Car Park (access via Edgbaston Park Road)
- North Car Park (access via Pritchatts Rd)
- Vincent Drive Car Park (access via Vincent Drive)
- Pritchatts Rd Car Park (at the junction with Vincent Drive)

All of the above are peripheral car parks and can be accessed without entering the main campus. The current cost is £1.00 per day.

Accommodation:

There are a number of available hotels located close to the University of Birmingham campus. For ease of transport, we recommend hotels either in Birmingham city centre (10 minute train journey) or on Hagley road (10 minute taxi ride).

Recommended Hotels:

Menzies Strathallan

225 Hagley Road
Birmingham, West Midlands B16 9RY
0121 455 9777
Price range: £50-60 per night

Premier Inn Birmingham Broad St (Canal Side)

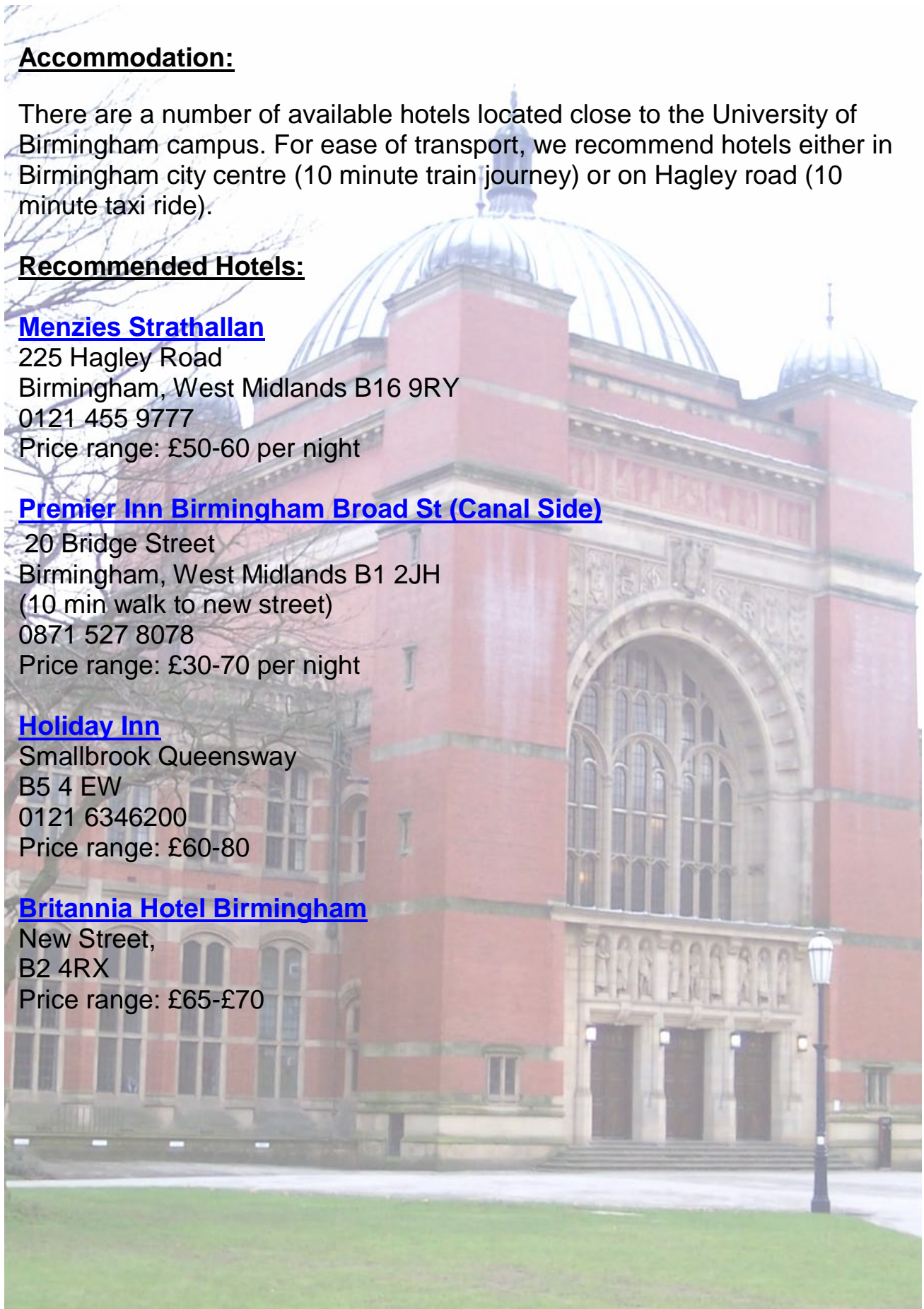
20 Bridge Street
Birmingham, West Midlands B1 2JH
(10 min walk to new street)
0871 527 8078
Price range: £30-70 per night

Holiday Inn

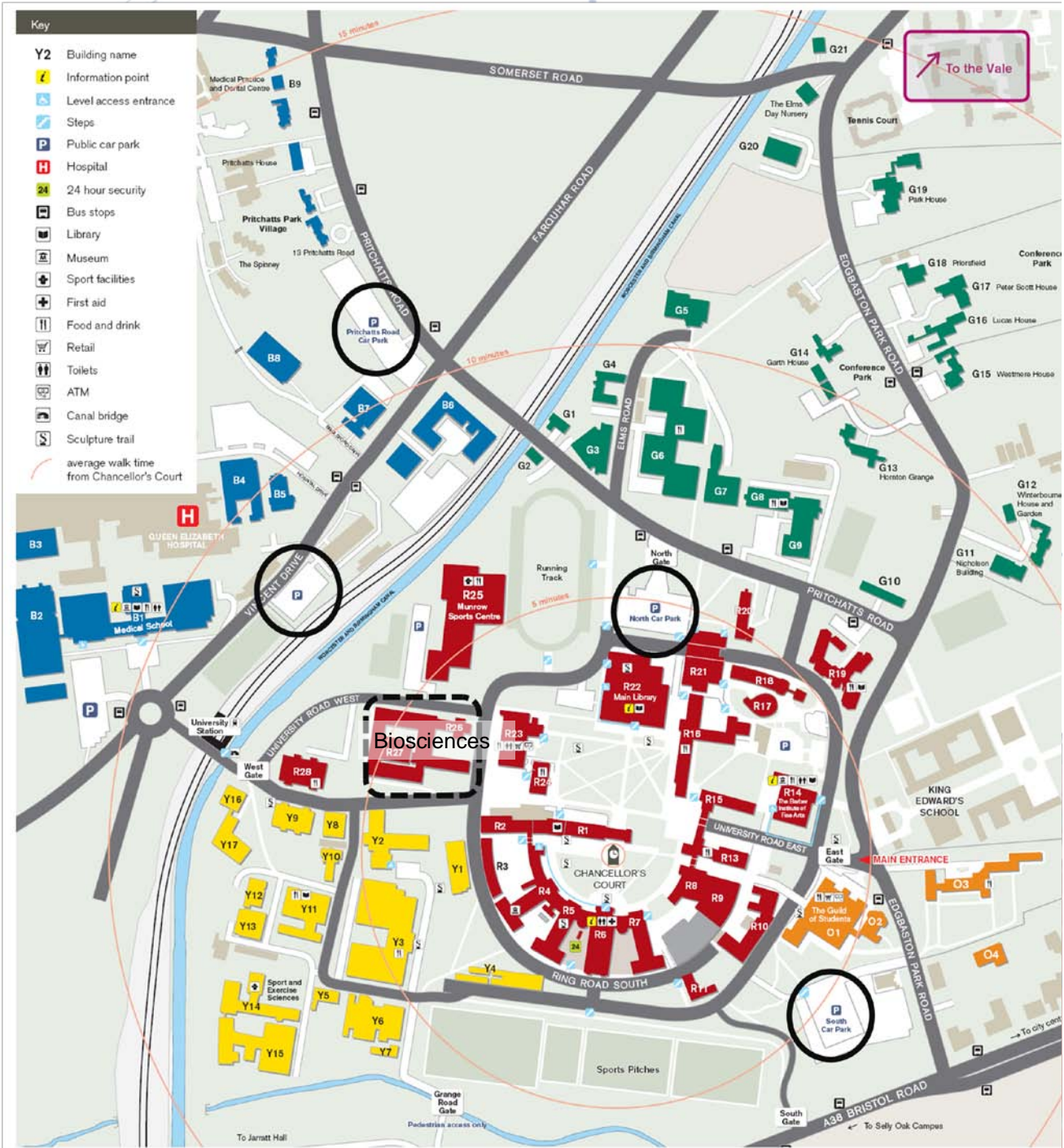
Smallbrook Queensway
B5 4 EW
0121 6346200
Price range: £60-80

Britannia Hotel Birmingham

New Street,
B2 4RX
Price range: £65-£70



Campus Map:



A PDF of this map is available [here](#).









